

FOR SALE

12.29 ± ACRES

E LAKE MARY BLVD SANFORD, FL 32771

**PIB**land  
DEVELOPMENT & INVESTMENTS



Located in Sanford, FL in Seminole County, this property is made up off 2 parcels for a total of 12.29 acres. Sanford is one the fastest growing area in Florida. Near upscale home subdivisions such as Heatrow, Alaqua, Timicuan, and many more. Easy access to the Greenway 417 and I-4.

- 12.29± Acres property
- Close to Highway 46 and E Lake Mary Blvd intersection
- 5 miles away from downtown Sanford Historic District and 3 miles away from the 417
- 1 mile away from Orlando Sanford International Airport
- Potential entrance from E Lake Mary Blvd

#### PROPERTY HIGHLIGHTS

**SIZE:**  
12.29 Acres

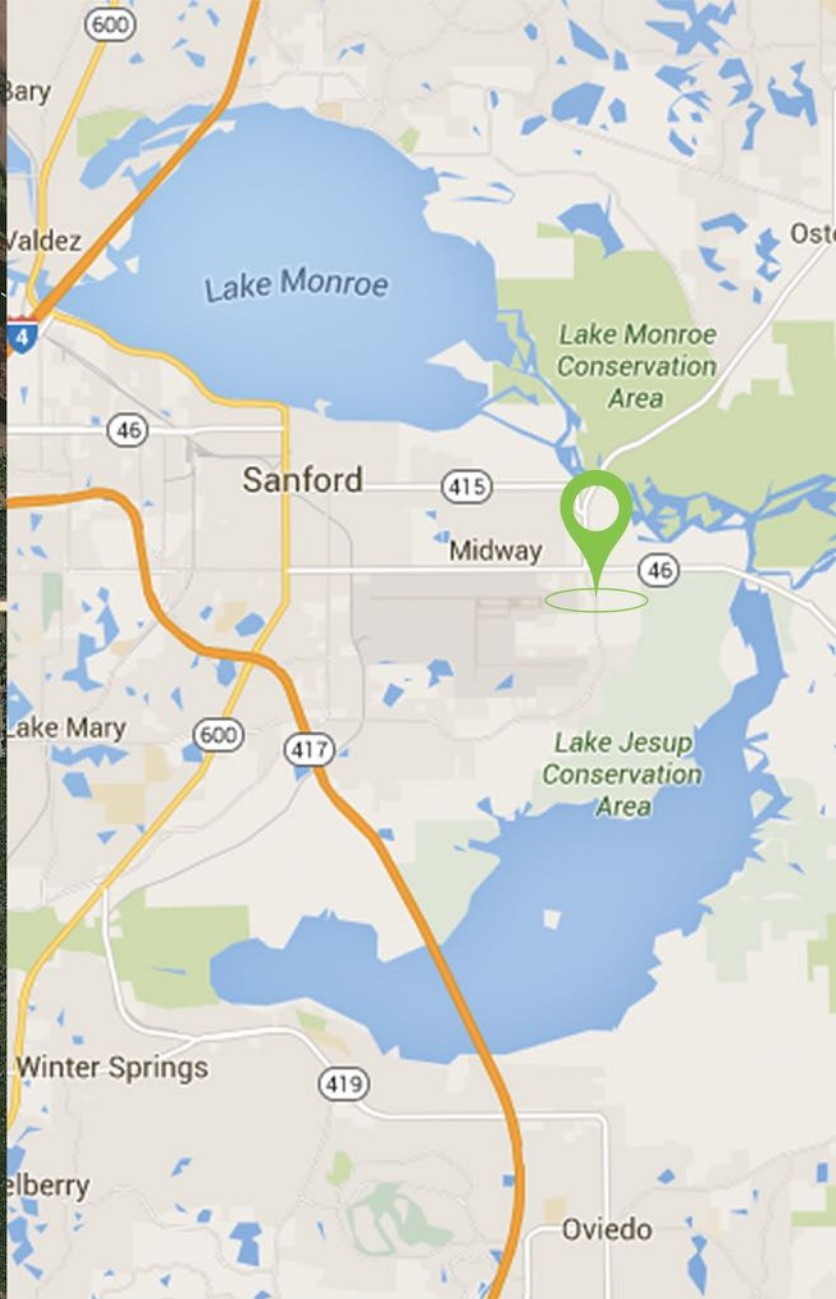
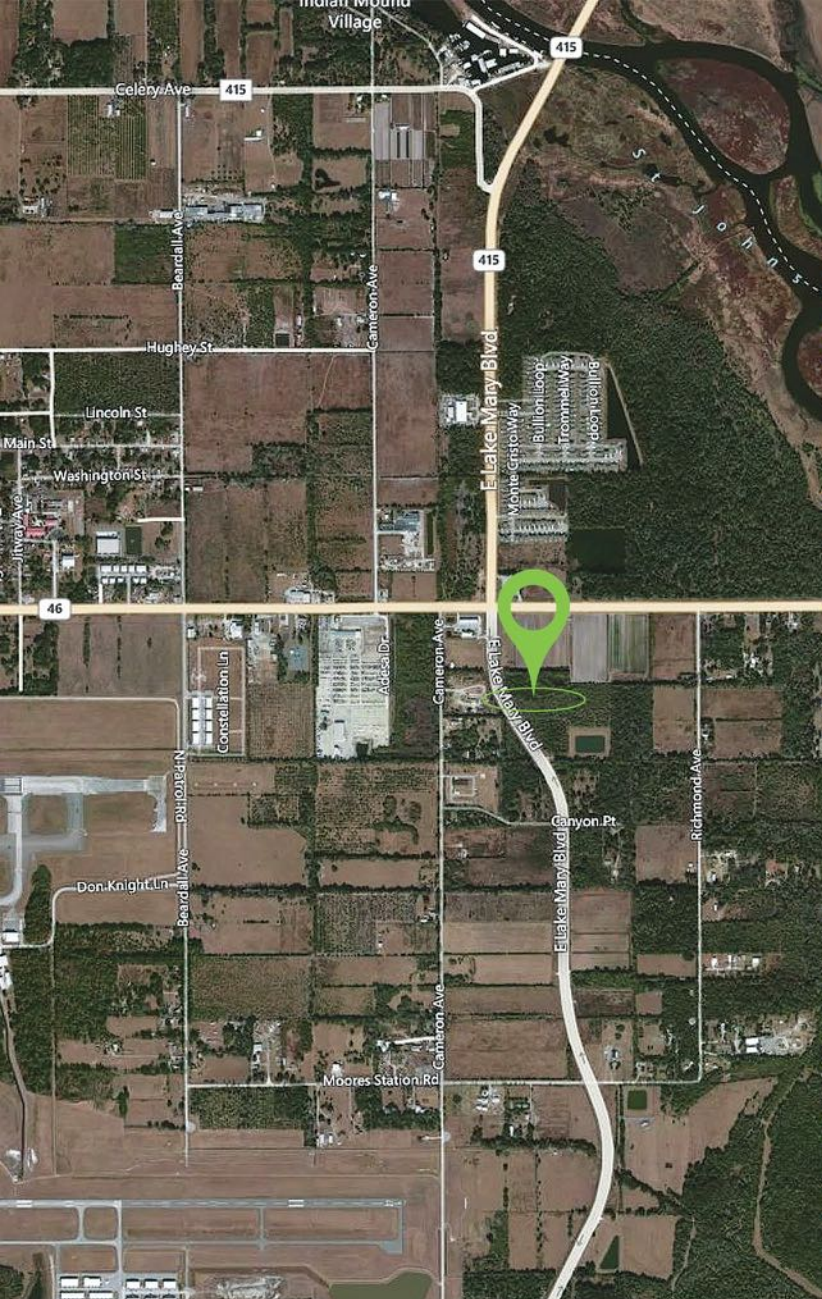
**ZONING:**  
Residential

**ADDRESS:**  
E Lake Mary Blvd. Sanford, FL 32771

**COUNTY:**  
Seminole County

**PRICE:**  
Please Call





Located 5 miles from downtown Sanford the property is surrounded by multiple residential communities and popular businesses. The high volume Sanford Int'l Airport is less than a mile from the location. I-4 and 417 located within that mile radius adds travel convenience.

**BOBBY LUTHRA**  
LICENSED REAL ESTATE ASSOCIATE

407-468-0099  
BOBLUTHRA@PIBLAND.COM

**PIBland**   
DEVELOPMENT & INVESTMENTS

