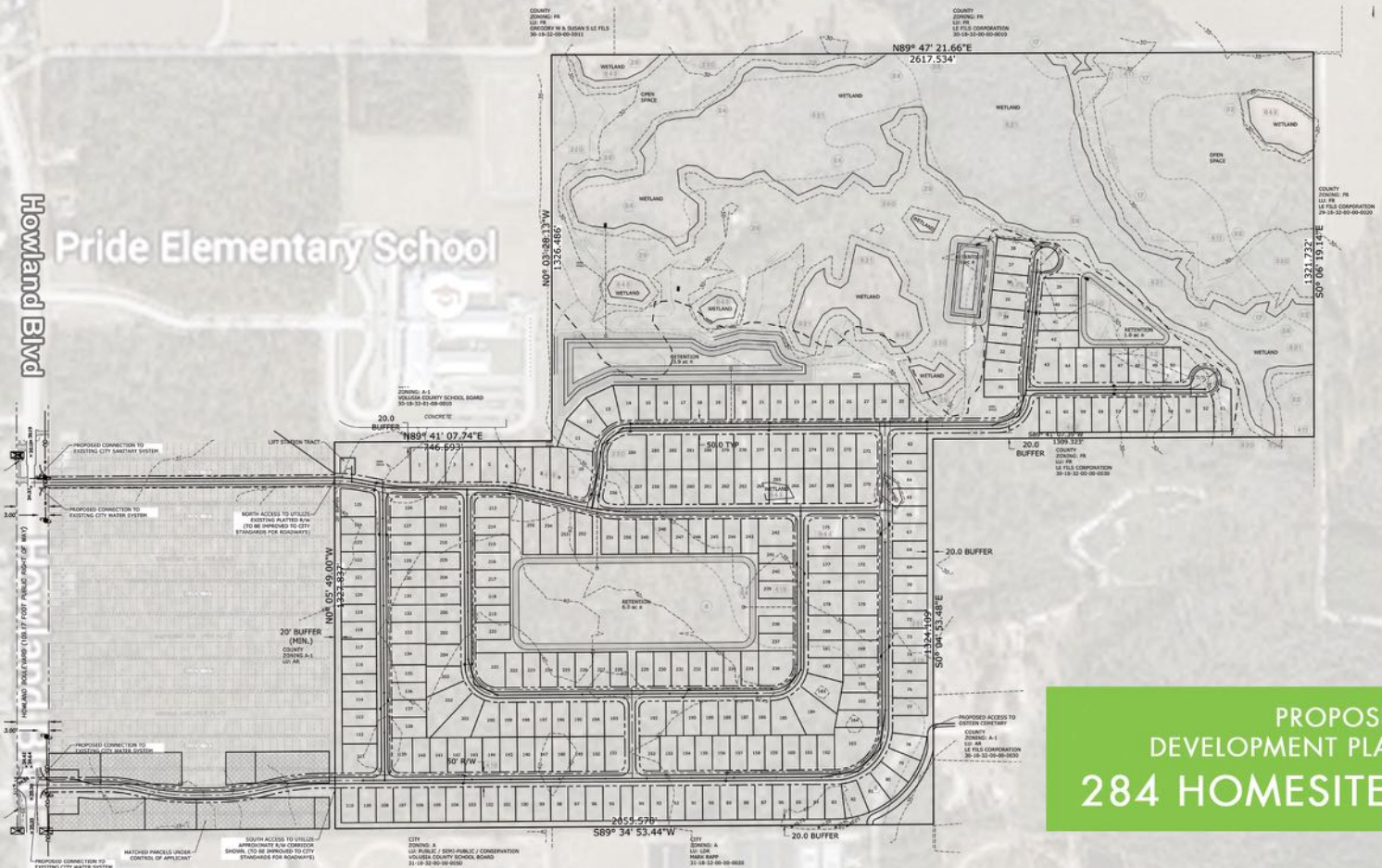


FOR SALE
142.2 ± ACRES
HOWLAND BLVD DELTONA, FL 32738

PIBland PROPERTY INVESTMENT BROKERS
DEVELOPMENT & INVESTMENTS
1987



PROPOSED
DEVELOPMENT PLAN
284 HOMESITES

Deltona is the largest city in Volusia County. It's located approximately half way between Orlando and Daytona Beach. With an estimated population of 85,219 people and a steady constant growth, this property brings a unique opportunity and excellent value. Fast growing population and employment area.

- Located behind Pride Elementary School, a less than 2 miles from Daytona State College and Deltona Country Club
- Only 4 miles to Interstate-4 and 30 minutes to Orlando
- Surrounded by dense residential communities
- Population of 97,000 within a 5-mile radius

PROPERTY HIGHLIGHTS

SIZE:
142.2 ± Acres

ZONING:
Residential

ADDRESS:
Howland Blvd. Deltona, FL 32738

COUNTY:
Volusia County

PRICE:
Please Call



DISTANCE TO

- DOWNTOWN SANFORD: 10 MILES
- DELTONA: 10 MILES
- NEW SMYRNA BEACH: 23 MILES
- ALTAMONTE SPRINGS: 25 MILES
- DAYTONA BEACH: 28 MILES
- DOWNTOWN ORLANDO: 35 MILES
- DISNEY: 52 MILES
- CAPE CANAVERAL: 70 MILES

BOBBY LUTHRA
 LICENSED REAL ESTATE ASSOCIATE

407-468-0099
 BOBLUTHRA@PIBLAND.COM



WWW.PIBLAND.COM

CONTACT US:
 Phone: 407-649-9888
 Fax: 407-649-7222

OFFICE LOCATION:
 27 North Summerlin Ave
 Orlando, FL 32801