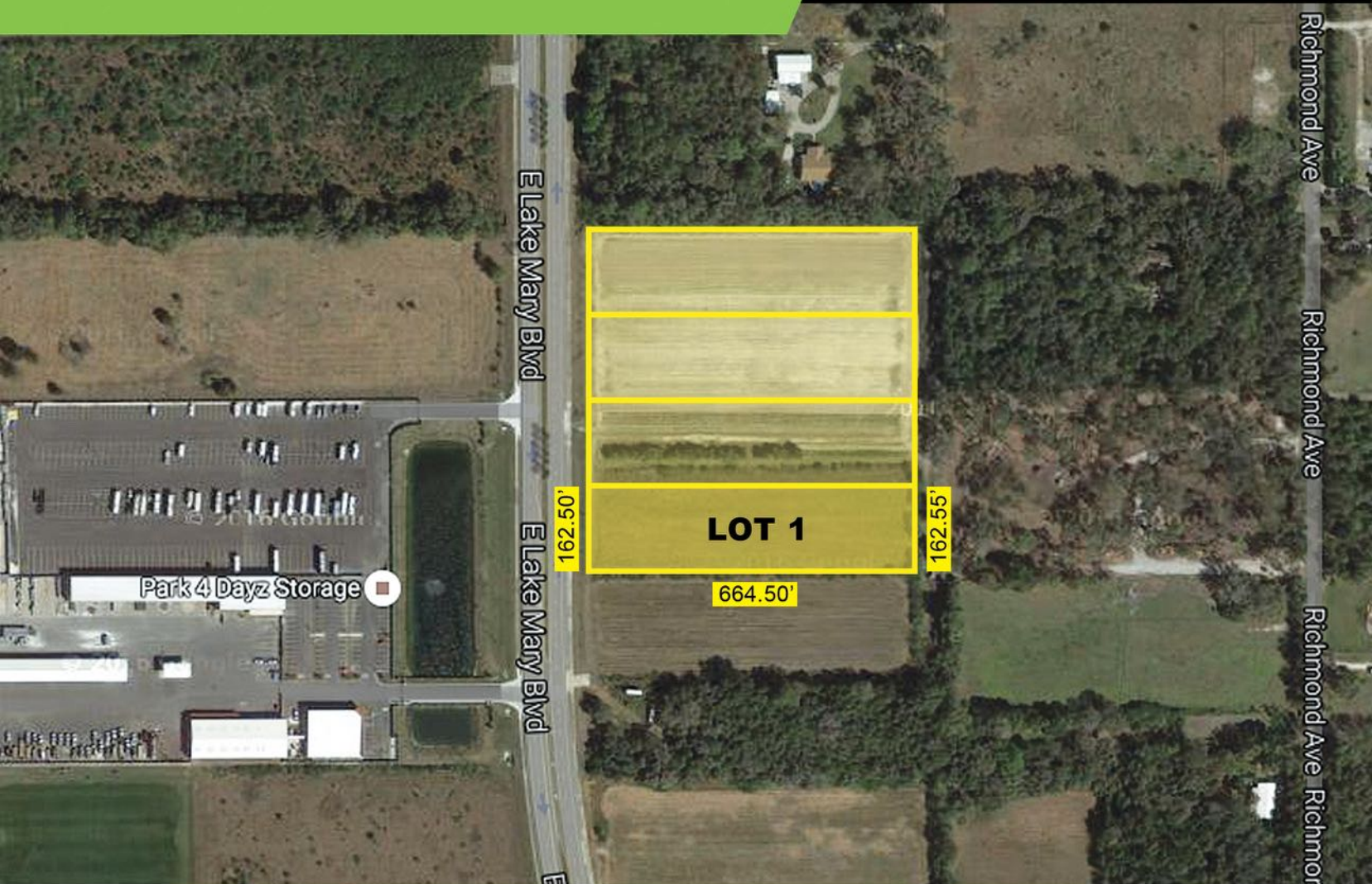


FOR SALE
LOT 1 - 2.5± ACRES
E LAKE MARY BLVD SANFORD, FL 32771



Located in Sanford, FL, the one of Central Florida's most eclectic cities. Sanford is one of the fastest growing area in Florida. Near upscale home subdivisions such as Heatrow, Alaqua, Timicuan, and many more. Easy access to the Greenway 417 and I-4.

- 1 Lot
- Close to Highway 46 and E Lake Mary Blvd intersection
- 5 miles away from downtown Sanford Historic District and 3 miles away from the 417
- 1 mile away from Orlando Sanford International Airport

PROPERTY HIGHLIGHTS

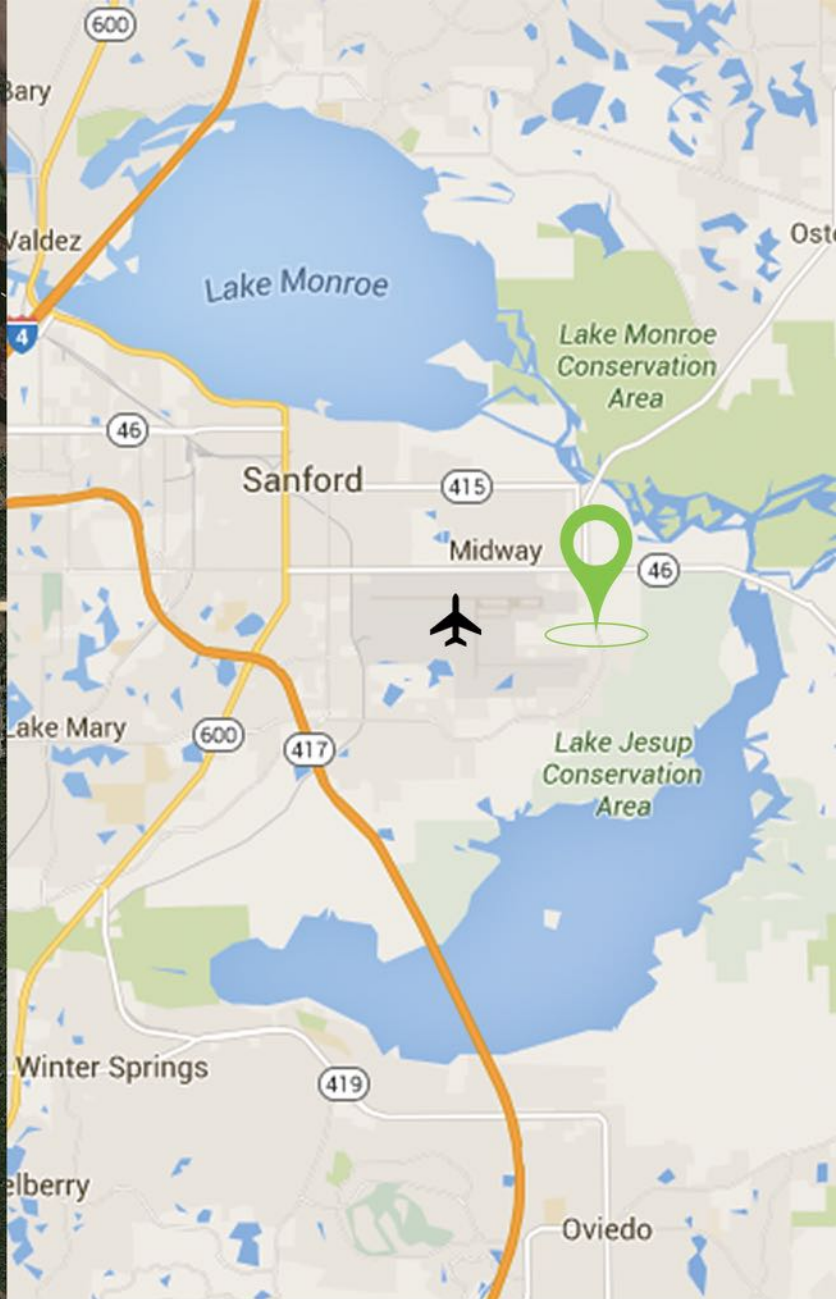
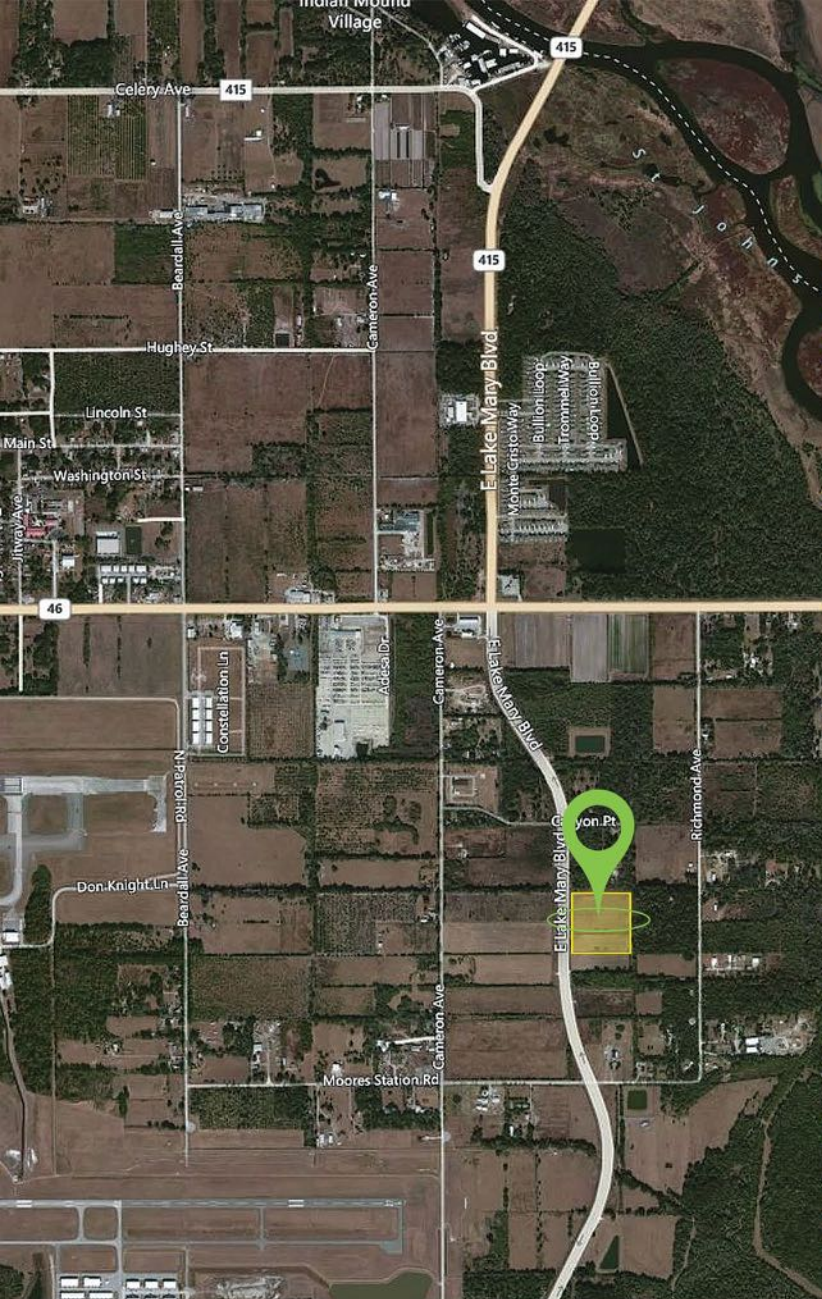
SIZE:
2.5± Acres

ZONING:
Residential

ADDRESS:
E Lake Mary Blvd. Sanford, FL 32771

COUNTY:
Seminole County

PRICE:
\$300,000



Located 5 miles from downtown Sanford the property is surrounded by multiple residential communities and popular businesses. The high volume Sanford Int'l Airport is less than a mile from the location. I-4 and 417 located within that mile radius adds travel convenience.

BOBBY LUTHRA
LICENSED REAL ESTATE ASSOCIATE

407-468-0099
BOBLUTHRA@PIBLAND.COM

PIBland
DEVELOPMENT & INVESTMENTS

