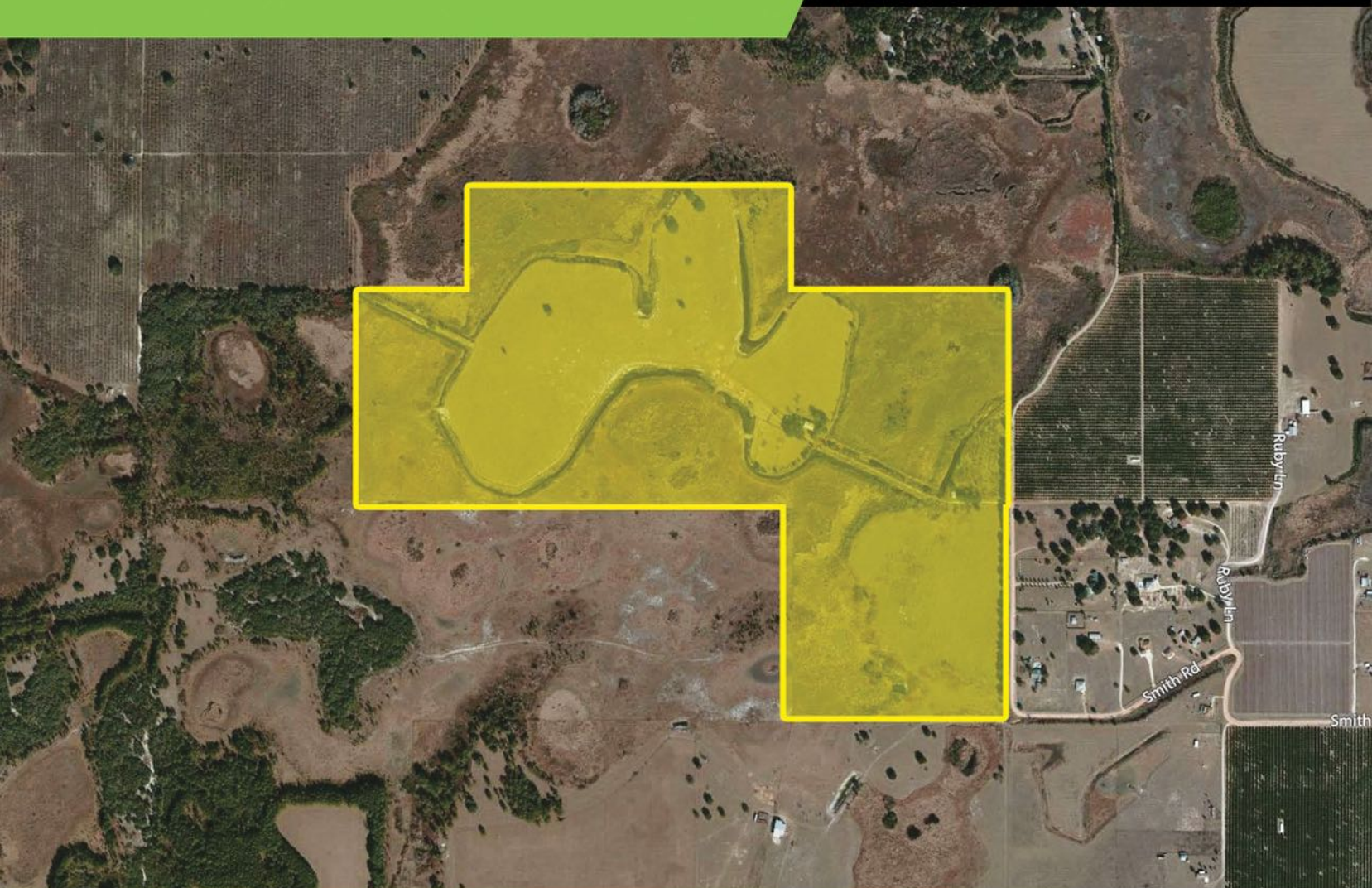


FOR SALE
190 ± ACRES
SMITH RD MASCOTTE, FL 32736



Located in the soon to flourish city of Mascotte, FL where the Average population is 5,102. Highway 33 and Highway 50 are the two major roads thta run throughout the city. The Property consists of approximately 190 acres of open land located a mile away from the heart of Mascotte, where multiple residential communities reside.

- Located in an area surrounded by residential communities and businesses
- Easy access to Hwy 33 and Hwy 50
- Potential Residential Community
- Population of 5,100 within a 5-mile radius

PROPERTY HIGHLIGHTS

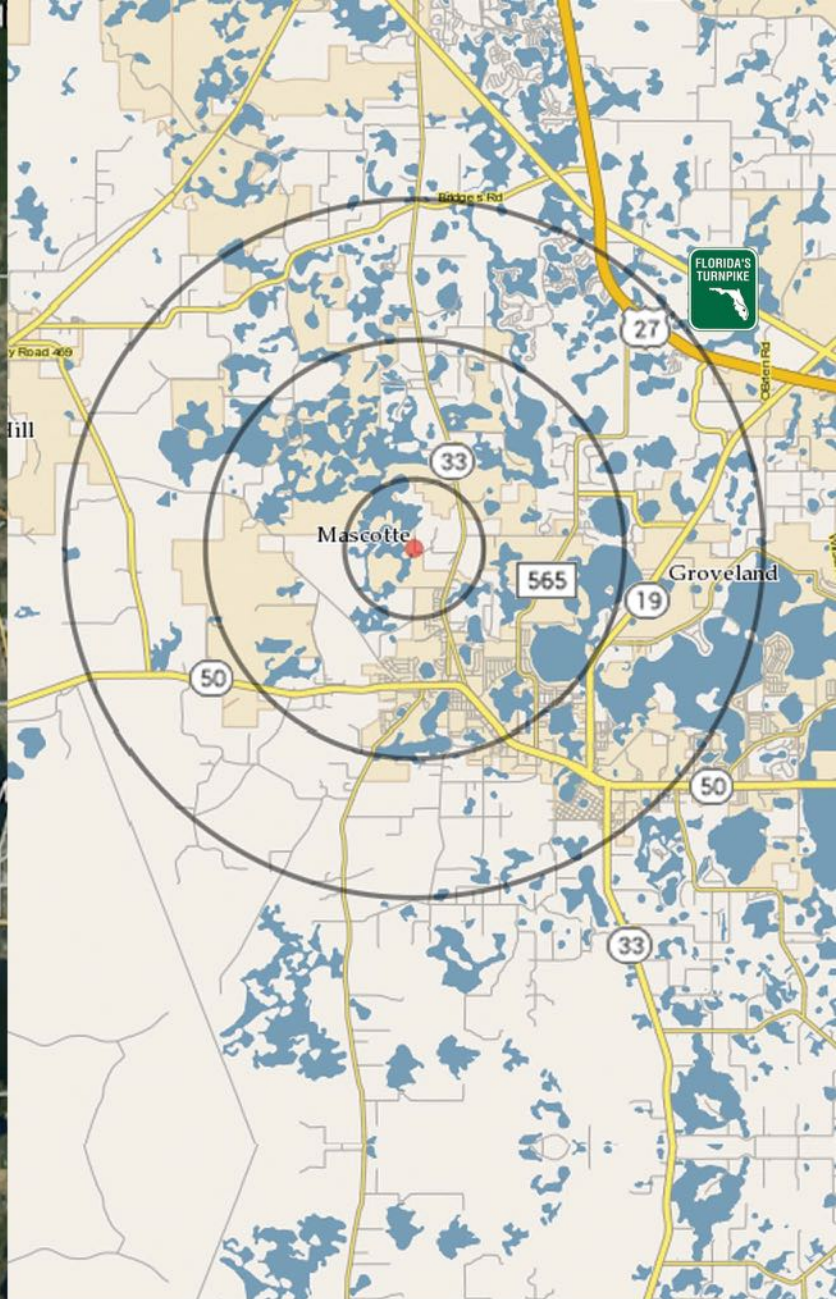
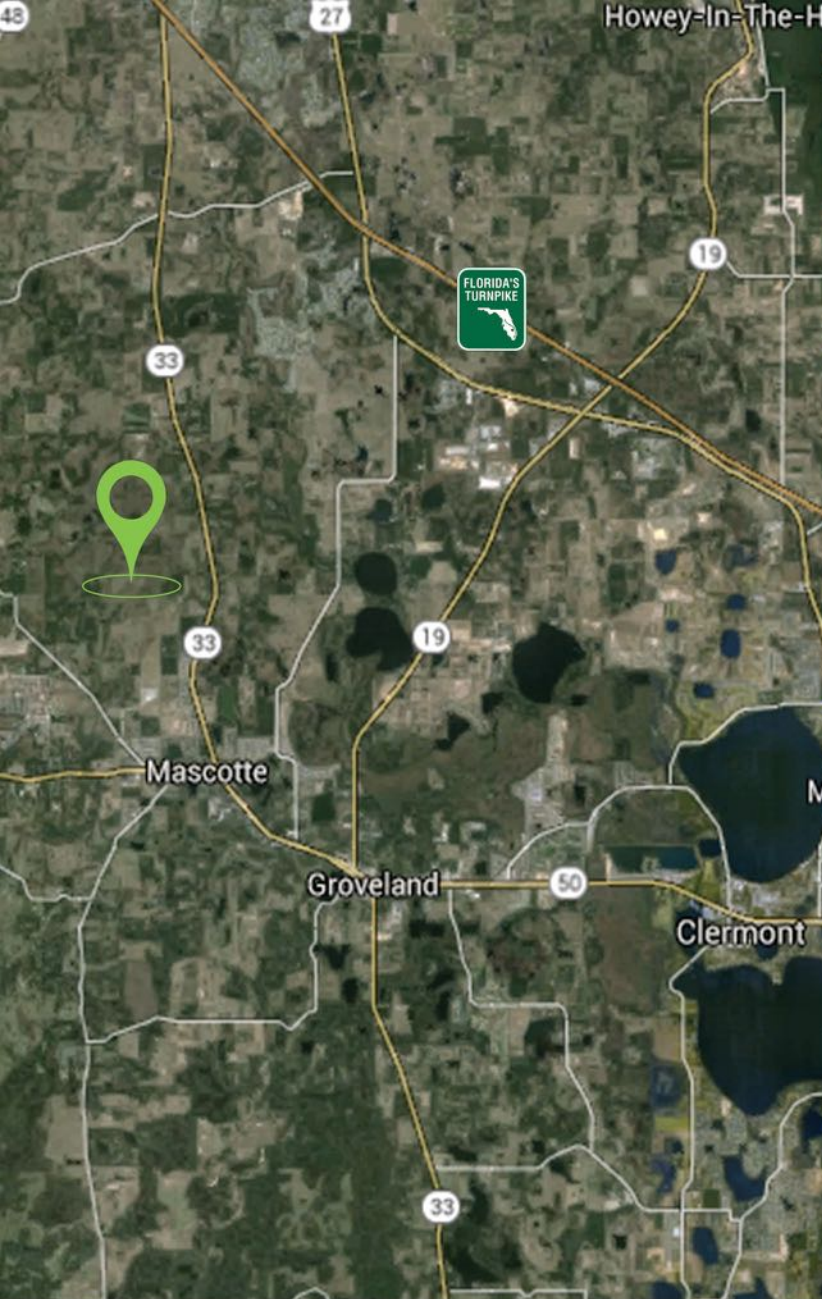
SIZE:
190 Acres

ZONING:
Residential

ADDRESS:
Smith Rd Mascotte, FL 32736

COUNTY:
Lake County

PRICE:
Please Call



TOTAL HOUSEHOLDS

1 MILE	3 MILES	5 MILES
142	4,241	5,495

TOTAL POPULATION

1 MILE	3 MILES	5 MILES
469	7,448	15,336

BOBBY LUTHRA
LICENSED REAL ESTATE ASSOCIATE

407-468-0099
BOBLUTHRA@PIBLAND.COM

