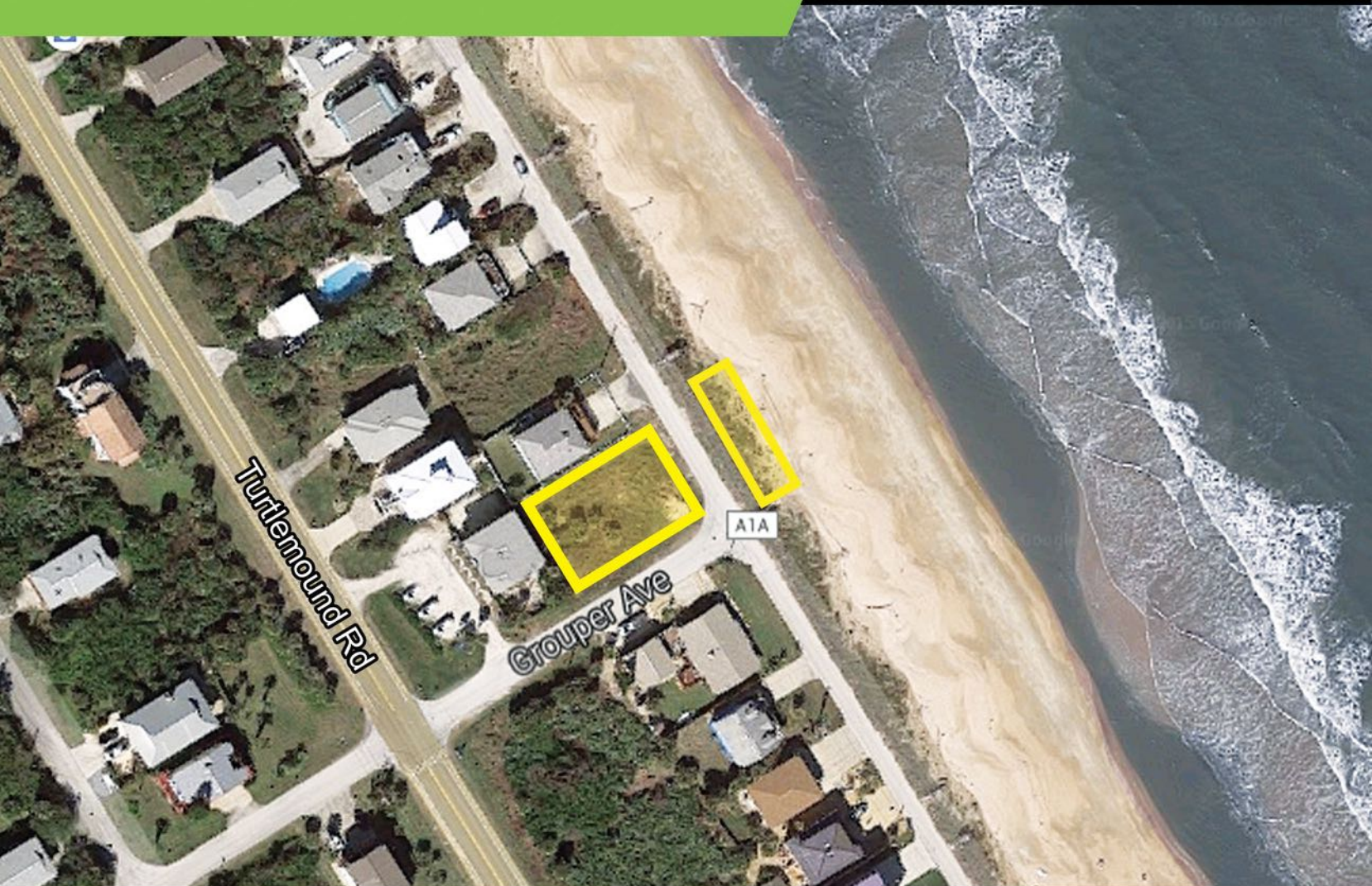


FOR SALE
75 FRONT FEET + 3 LOTS OCEAN FRONT
S ATLANTIC AVE NEW SMYRNA BEACH, FL 32169

PIBland
DEVELOPMENT & INVESTMENTS



This property is located in New Smyrna Beach, a city in Volusia County, located on the central east coast of the state, with the Atlantic Ocean to the east. Its population was estimated to be 23,230 in 2013 by the United States Census Bureau. The surrounding area offers many opportunities for outdoor recreation: these include fishing, sailing, motorboating, golfing, hiking, swimming, scuba diving, kitesurfing, and surfing. It was recognized as "one of the world's top 20 surf towns"

- Excellent Ocean View
- Less than a mile from Mary McLeod Bethune Beach Park
- Close proximity to shopping and restaurants
- Don't miss this opportunity!

PROPERTY HIGHLIGHTS

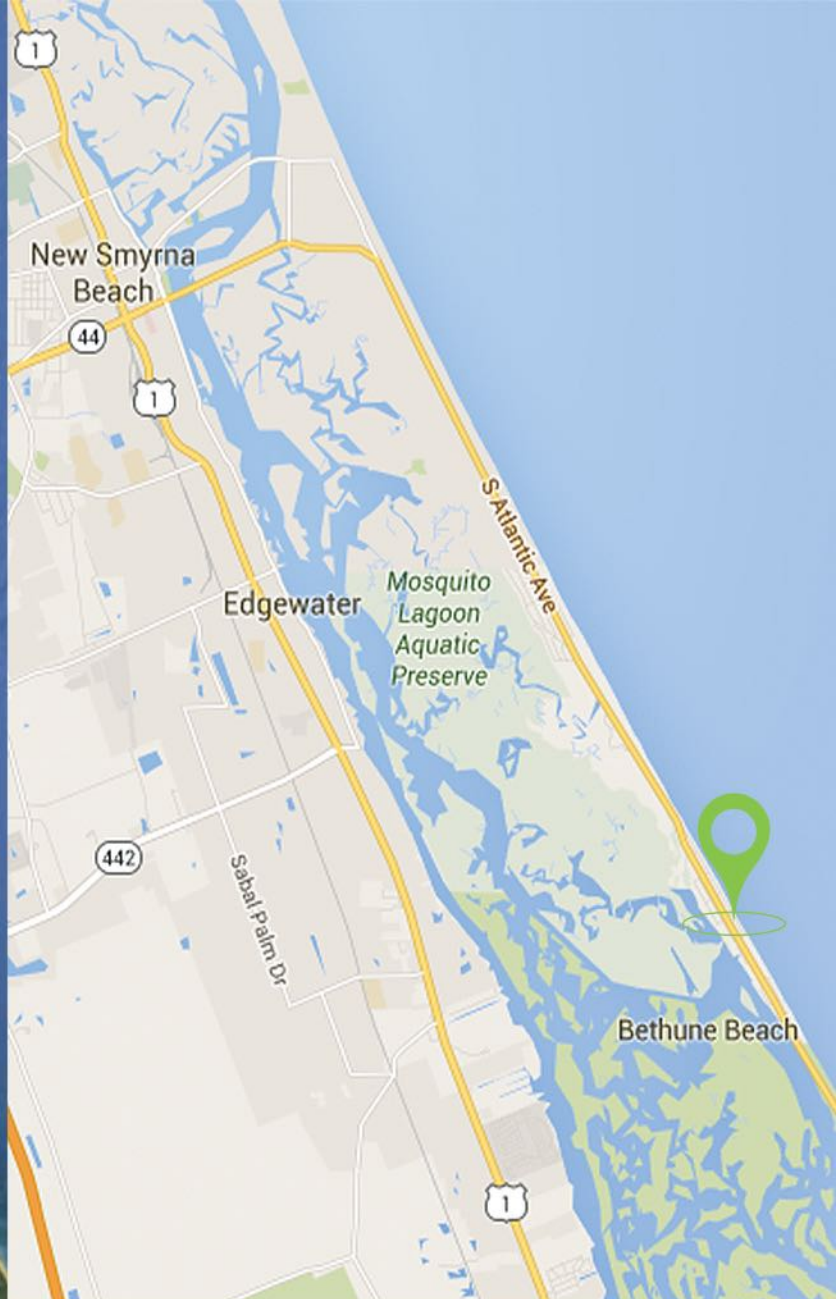
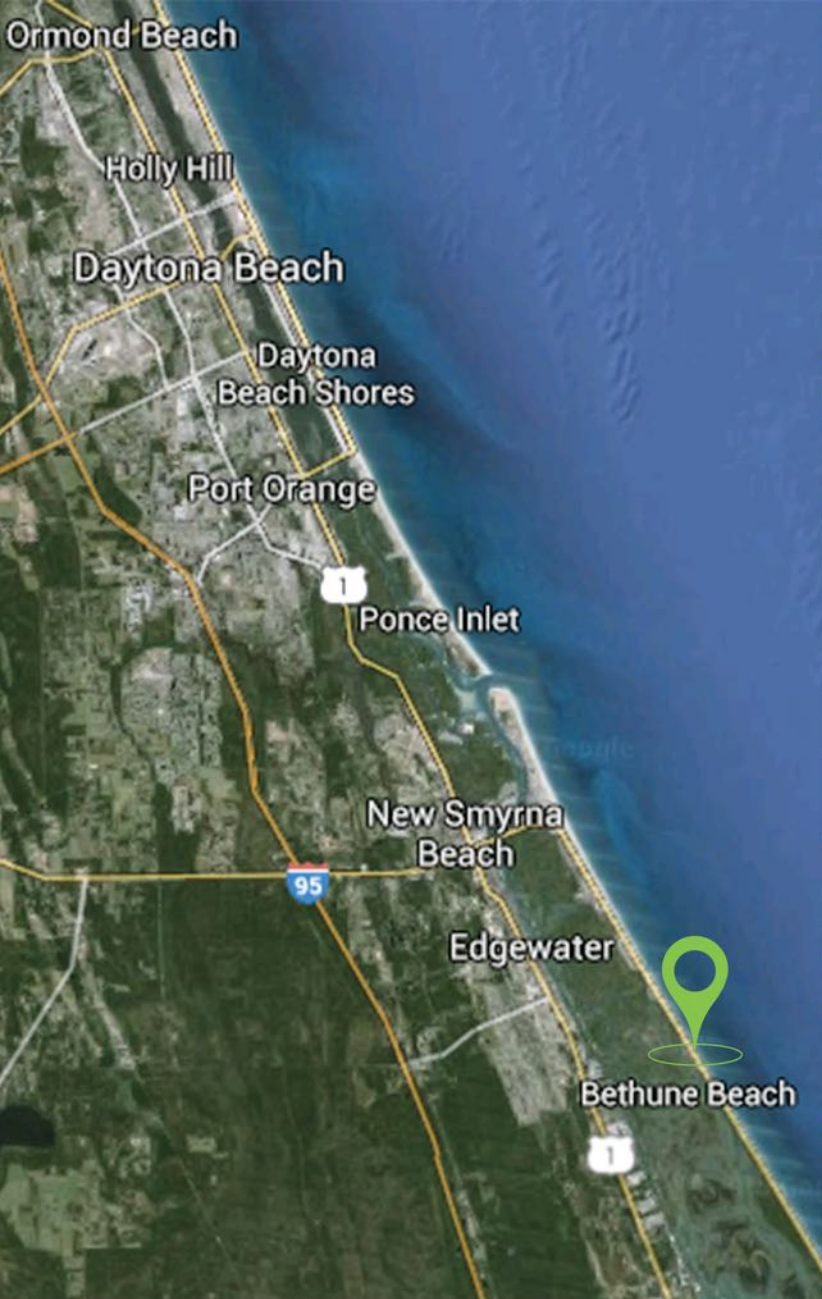
SIZE:
75 Front Feet + 3 Lots Ocean Front

ZONING:
Residential

ADDRESS:
S Atlantic Ave
New Smyrna Beach, FL 32169

COUNTY:
Volusia County

PRICE:
Please Call



DISTANCE TO

PORT ORANGE: 18 MILES

DAYTONA BEACH: 22 MILES

DELAND: 30 MILES

DELTONA: 35 MILES

SANFORD INT'L AIRPORT: 10 MILES

DOWNTOWN ORLANDO: 63 MILES

BOBBY LUTHRA
 LICENSED REAL ESTATE ASSOCIATE

407-468-0099
 BOBLUTHRA@PIBLAND.COM



WWW.PIBLAND.COM

CONTACT US:
 Phone: 407-649-9888
 Fax: 407-649-7222

OFFICE LOCATION:
 27 North Summerlin Ave
 Orlando, FL 32801