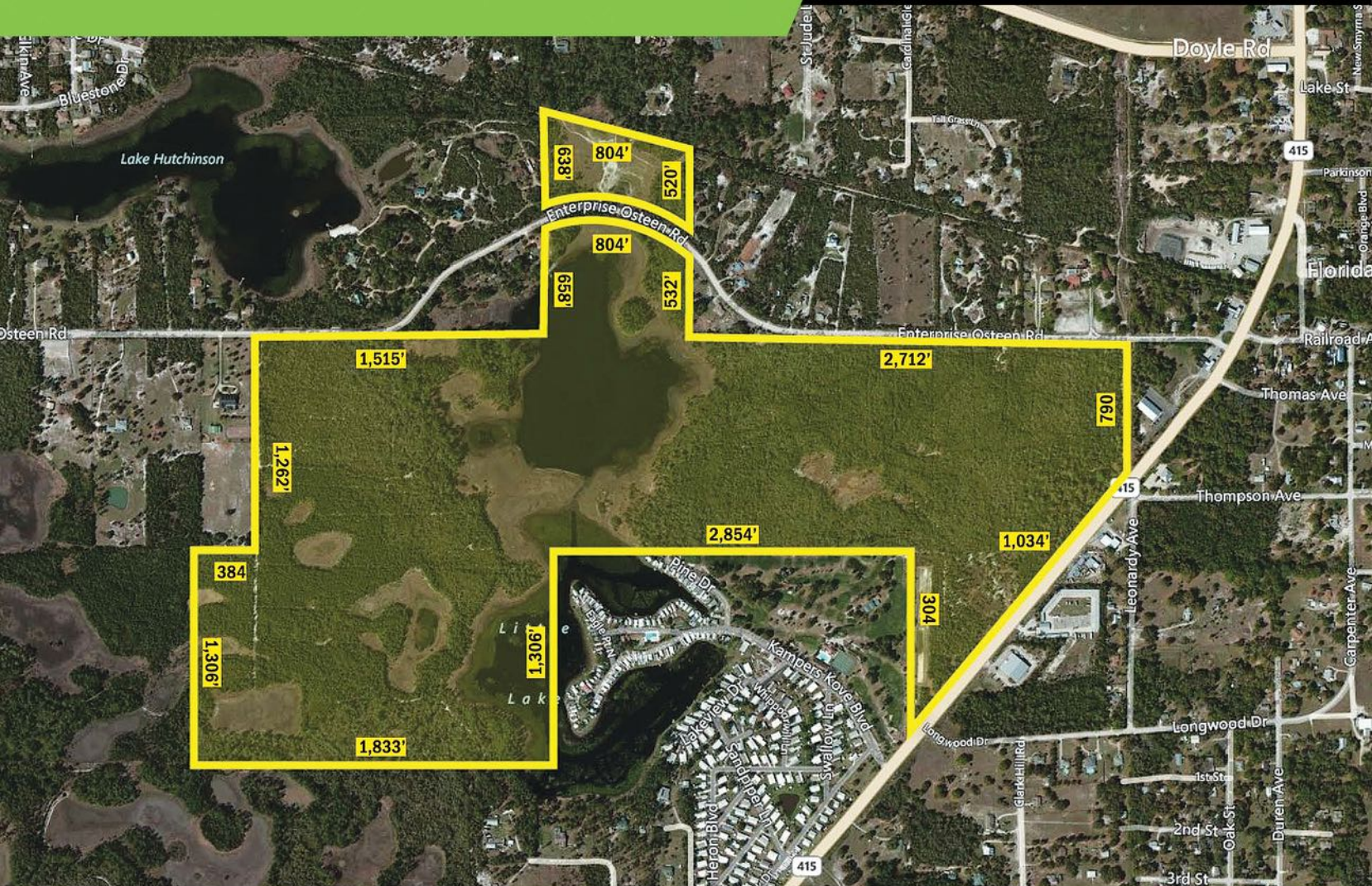


FOR SALE
220 ± ACRES
ENTERPRISE OSTEEN RD OSTEEN, FL 32764



Osteen is located in the southwestern region of Volusia County, Florida. Osteen is a natural paradise with the St. Johns River, Lake Jesup, Lake Monroe as well as typically native wetlands, swamps, forests and wildlife of Florida. Osteen attracts a fair number of visitors for these qualities. This property is made up of 4 parcels that add up to 220 ± acres.

- Over a mile of frontage on Enterprise Osteen Rd
- Multiple residential and commercial developments in the area
- Centered between major destinations; Orlando attractions and the Atlantic Coast
- Over 500,000 people live in Volusia County

PROPERTY HIGHLIGHTS

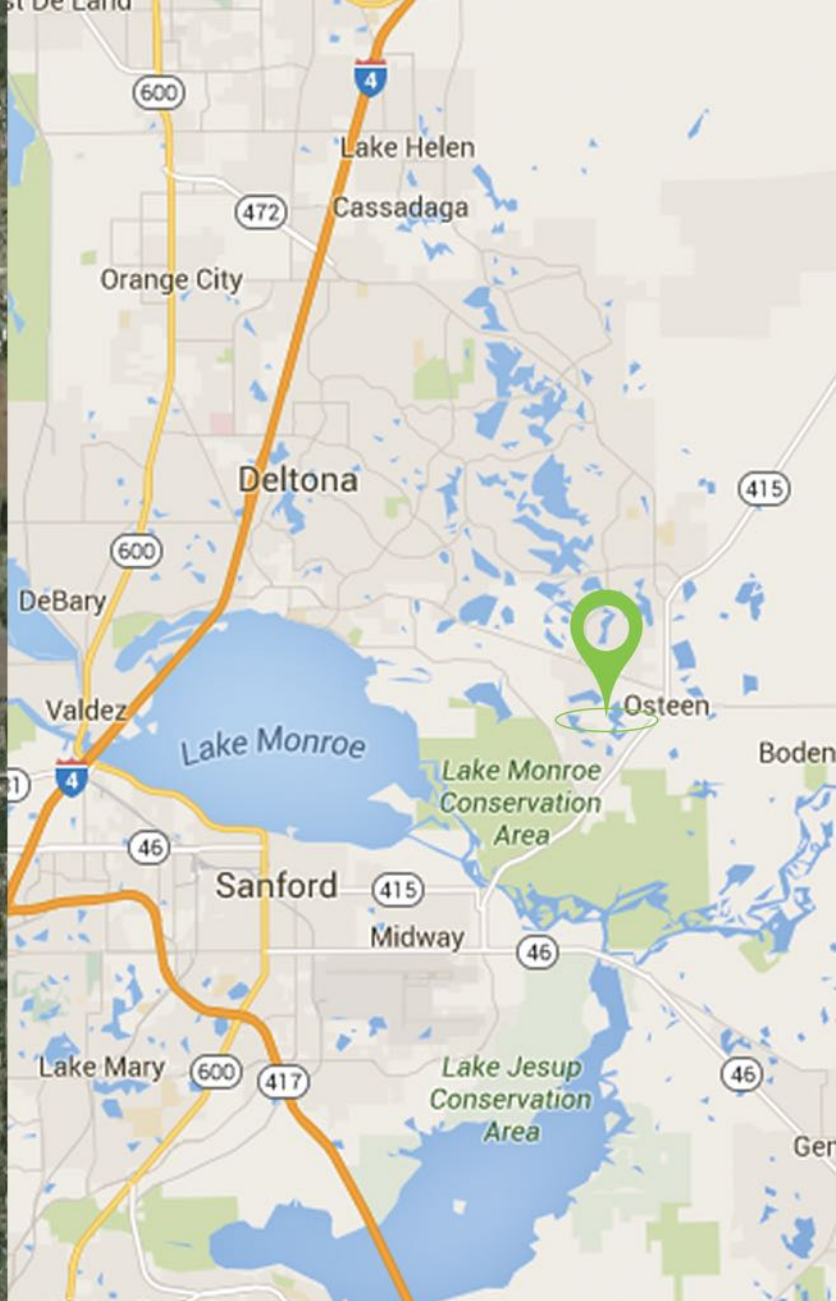
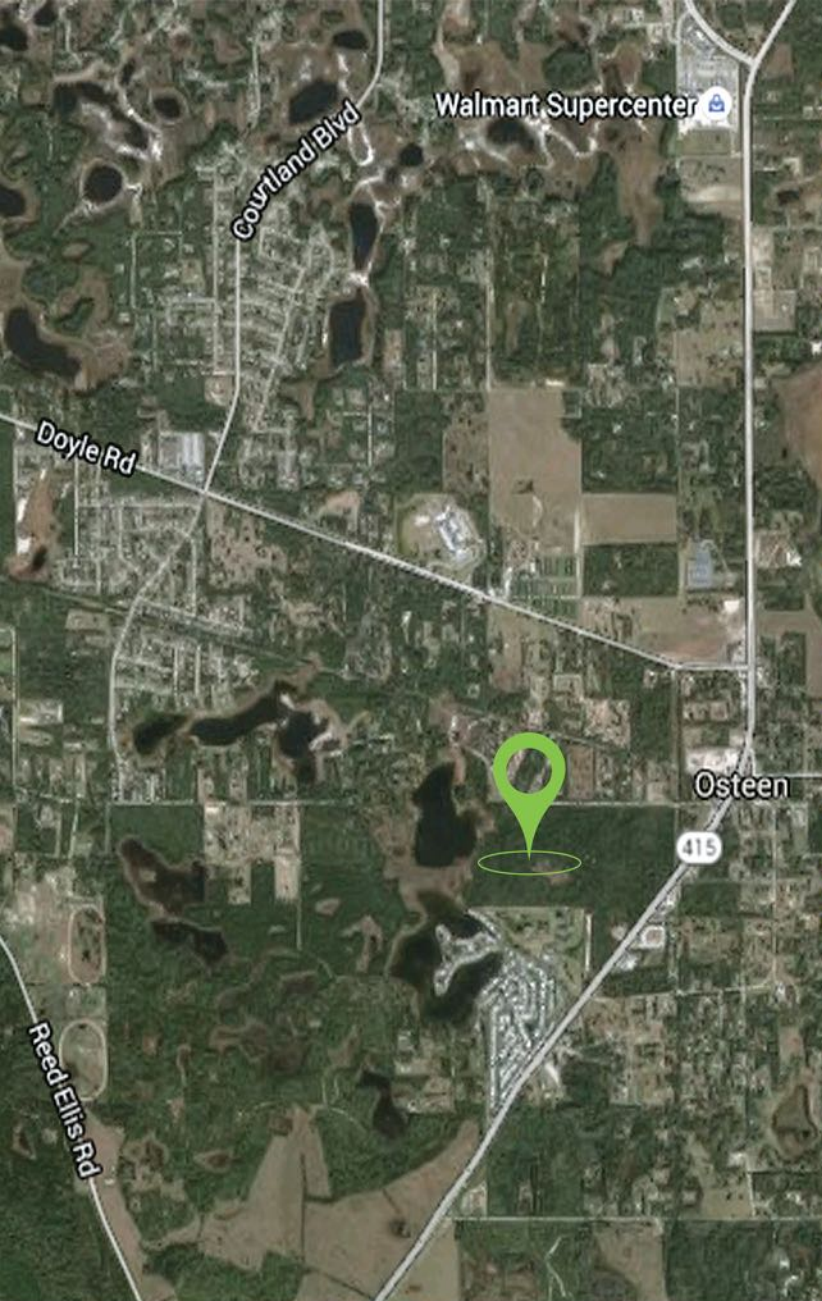
SIZE:
220 Acres

ZONING:
Commercial

ADDRESS:
Enterprise Osteen Rd.
Osteen, FL 32764

COUNTY:
Volusia County

PRICE:
Please Call



DISTANCE TO

DOWNTOWN SANFORD: 10 MILES

DELTONA: 10 MILES

NEW SMYRNA BEACH: 23 MILES

ALTAMONTE SPRINGS: 25 MILES

DAYTONA BEACH: 28 MILES

DOWNTOWN ORLANDO: 35 MILES

DISNEY: 52 MILES

CAPE CANAVERAL: 70 MILES

BOBBY LUTHRA
 LICENSED REAL ESTATE ASSOCIATE

407-468-0099
 BOBLUTHRA@PIBLAND.COM

