

FOR SALE
14.04 ± ACRES / 41 LOTS
CELERY AVE SANFORD, FL 32771

PIBland
DEVELOPMENT & INVESTMENTS



Sanford is one of Central Florida's most eclectic cities. In coming years, the new and different will mix with the familiar and stable. An eclectic blend of a vital downtown, an attractive waterfront, productive industry and good neighborhoods retains the historic character and rich cultural legacy of Sanford.

- Close to downtown Sanford and Lake Monroe on Celery Avenue.
- 1 mile away from Orlando Sanford Int'l Airport
- On Celery Ave next to D.R Horton and across from Mercedes Home
- Single Family Residential Zoning
- Water & Sewer at Site
- Next to Hamilton Elementary School and few miles from Midway Elementary and Sanford Middle School (A)

PROPERTY HIGHLIGHTS

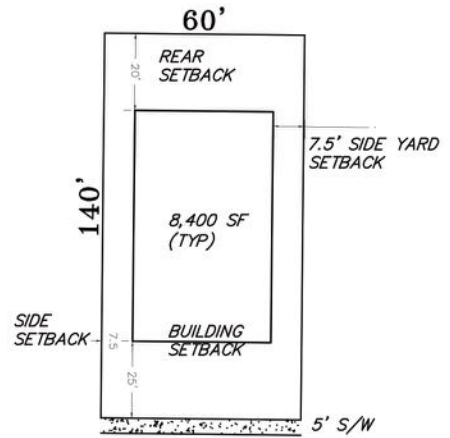
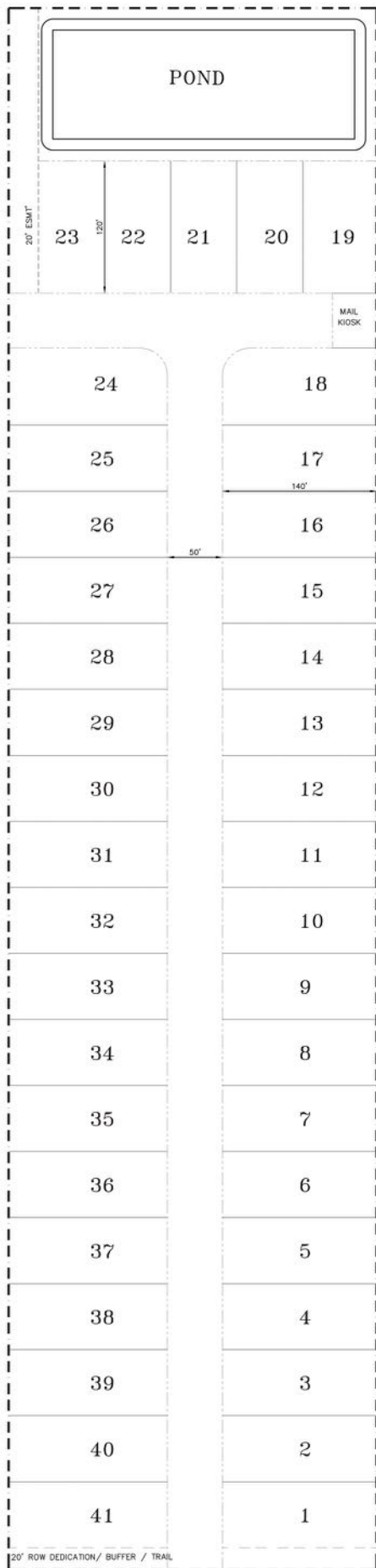
SIZE:
14.04 Acres / 41 Lots

ZONING:
Residential SR-1

ADDRESS:
Celery Ave. Sanford, FL 32771

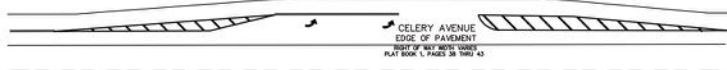
COUNTY:
Seminole County

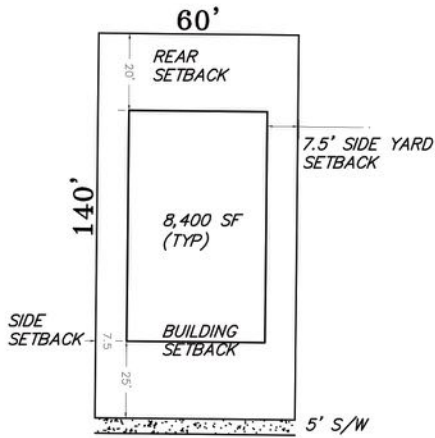
PRICE:
Please Call



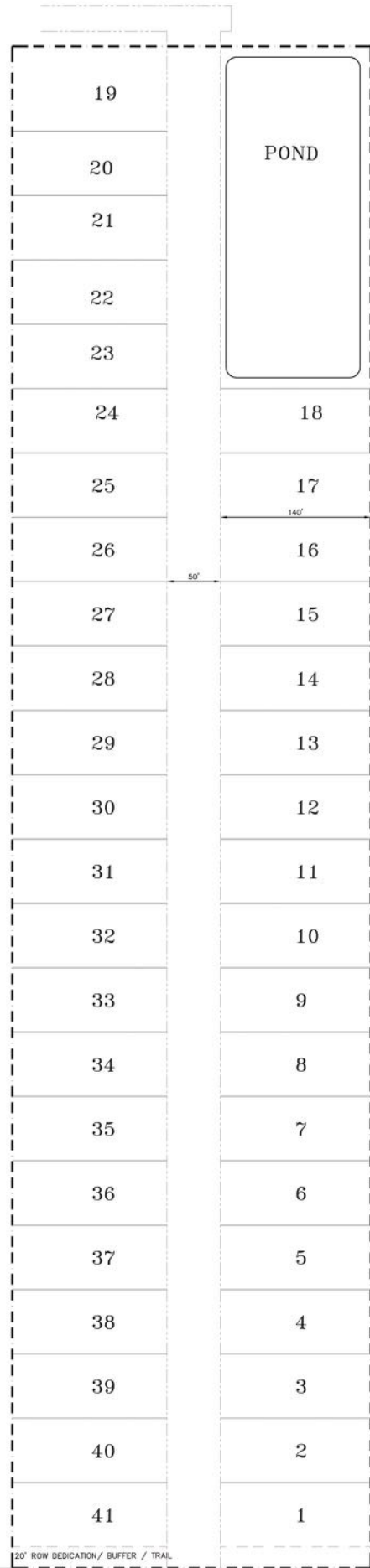
1 TREE REQ. FRONT YARD

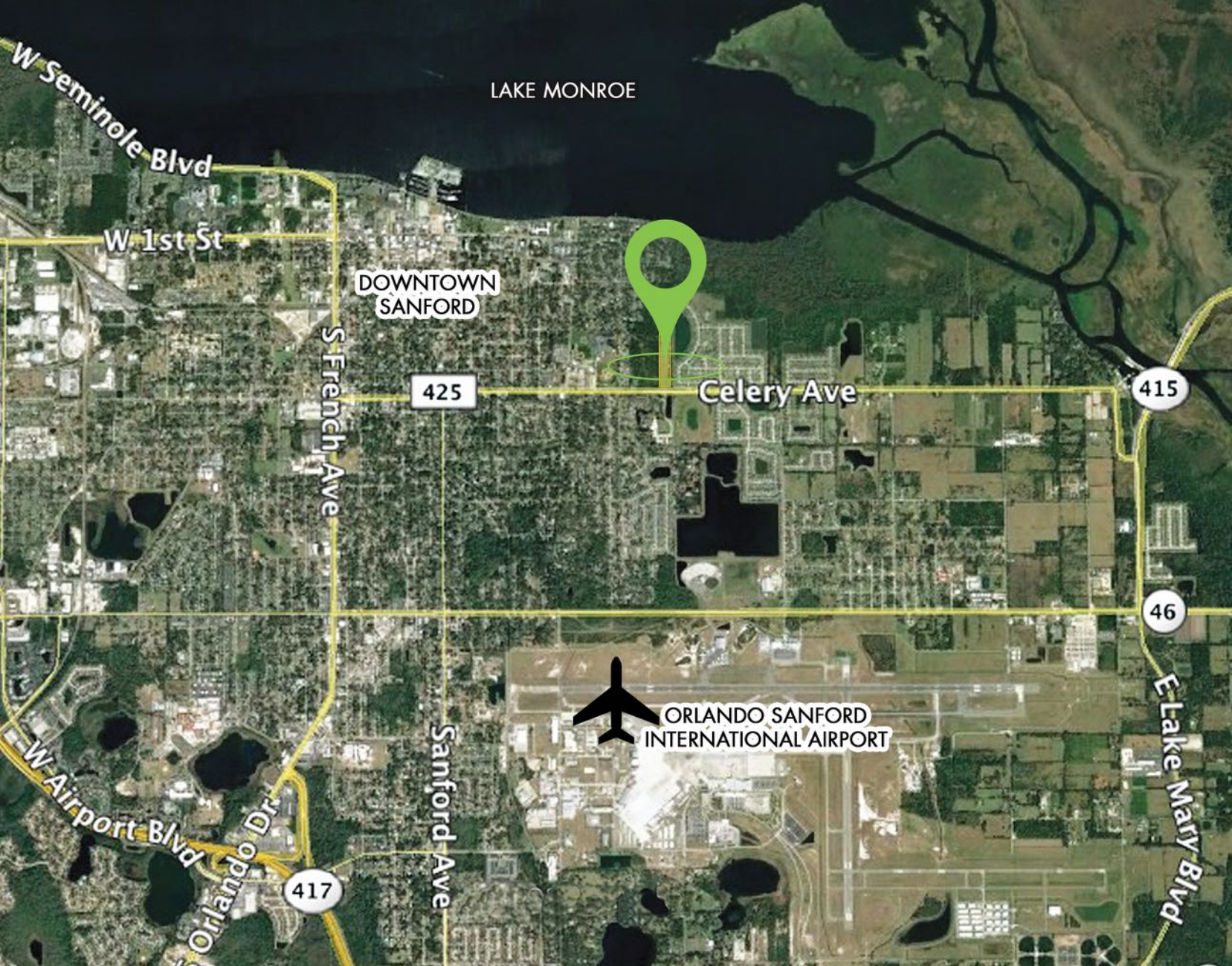
CITY ZONING SR-1





CITY ZONING SR-1



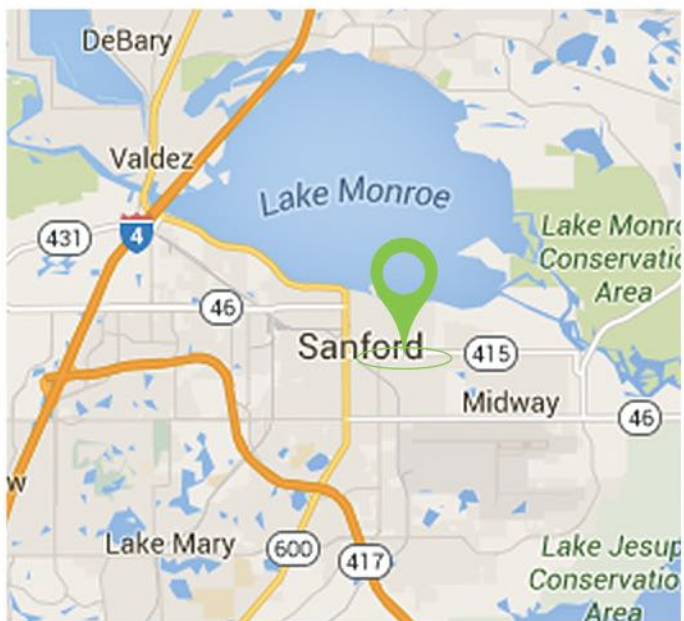


LAKE MONROE

DOWNTOWN SANFORD

Celery Ave

ORLANDO SANFORD INTERNATIONAL AIRPORT



BOBBY LUTHRA
LICENSED REAL ESTATE ASSOCIATE

407-468-0099
BOBLUTHRA@PIBLAND.COM



WWW.PIBLAND.COM

CONTACT US:
Phone: 407-649-9888
Fax: 407-649-7222

OFFICE LOCATION:
27 North Summerlin Ave
Orlando, FL 32801