

FOR SALE 150 ± ACRES

225 TRADESPORT DR, SANFORD, FL 32773



Sanford is one of Central Florida's most eclectic cities. In coming years, the new and different will mix with the familiar and stable. An eclectic blend of vital downtown, an attractive waterfront, productive industry and good neighborhoods retains the historic character and rich cultural legacy of Sanford.

- Located a few hundred feet from entrance to Sanford Int'l Airport
- City approved plans for Residential Development
- Water, Server and Electricity to Site
- Population of 105,000 people within a 5-mile radius. Average household income of \$71,119
- Ready to develop - Great Potential!

PROPERTY HIGHLIGHTS

SIZE:
150 Acres

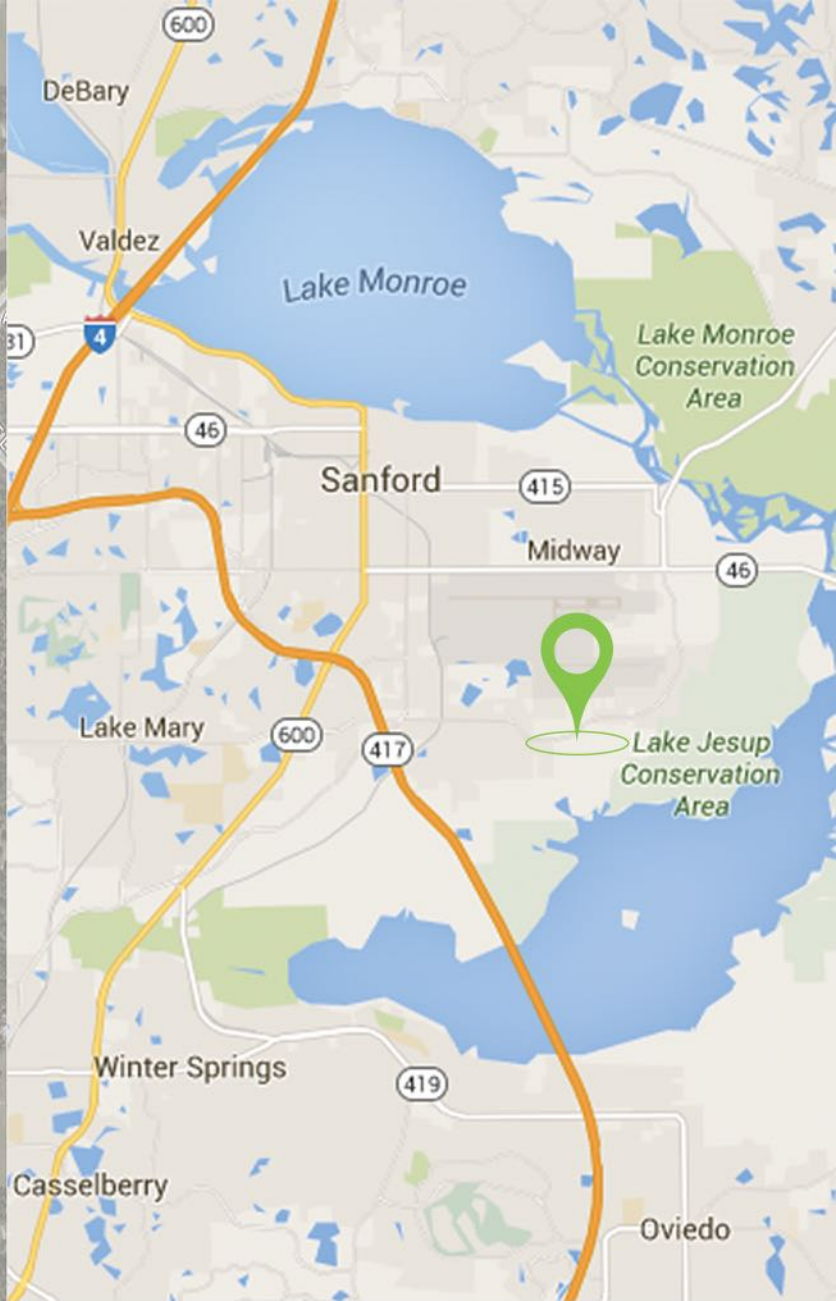
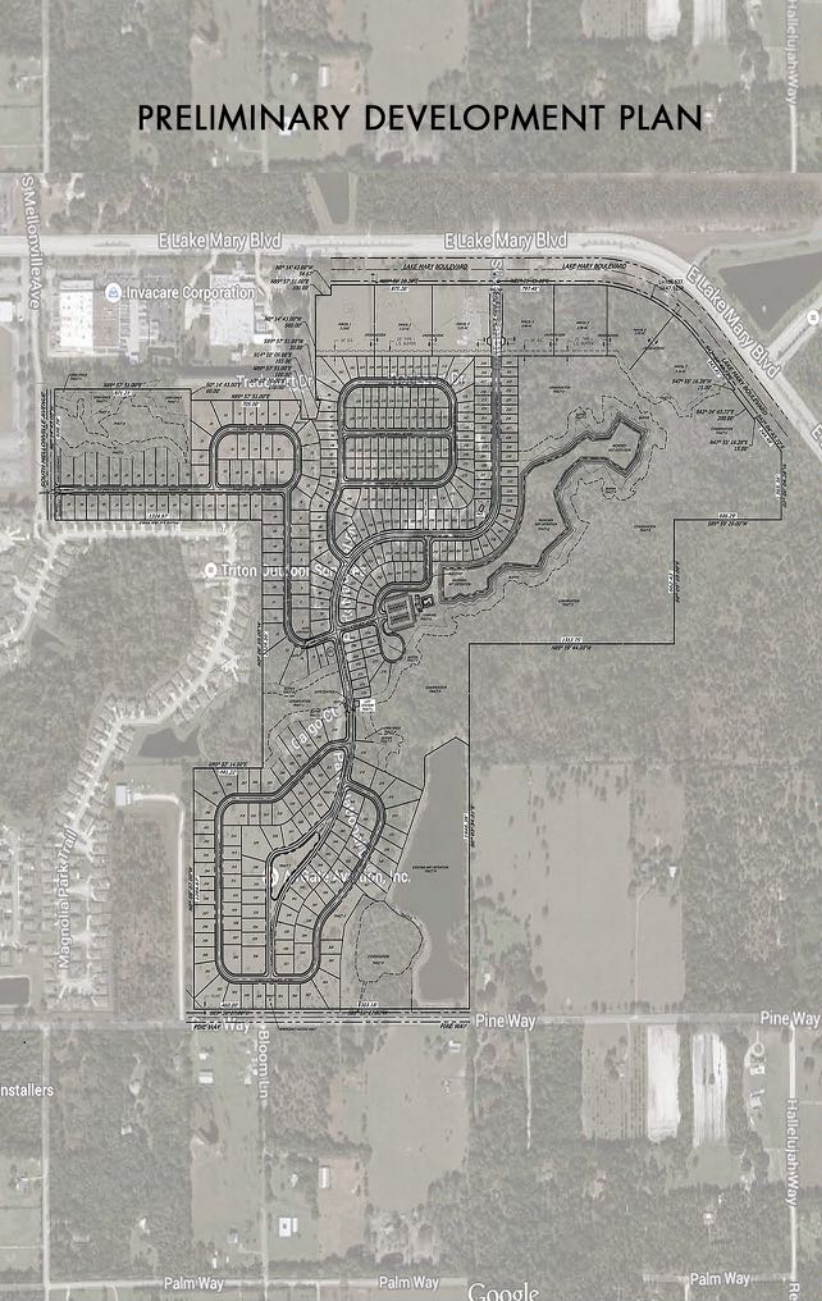
ZONING:
Industrial

ADDRESS:
225 Tradesport Dr,
Sanford, FL 32773

COUNTY:
Seminole County

PRICE:
Please Call

PRELIMINARY DEVELOPMENT PLAN



Located 5 miles from downtown Sanford the property is surrounded by multiple residential communities and popular businesses. The high volume Sanford Int'l Airport is less than a mile from the location. I-4 and 417 located within that mile radius adds travel convenience.

BOBBY LUTHRA
LICENSED REAL ESTATE ASSOCIATE

407-468-0099
BOBLUTHRA@PIBLAND.COM

PIBland
DEVELOPMENT & INVESTMENTS



WWW.PIBLAND.COM

CONTACT US:
Phone: 407-649-9888
Fax: 407-649-7222

OFFICE LOCATION:
27 North Summerlin Ave
Orlando, FL 32801