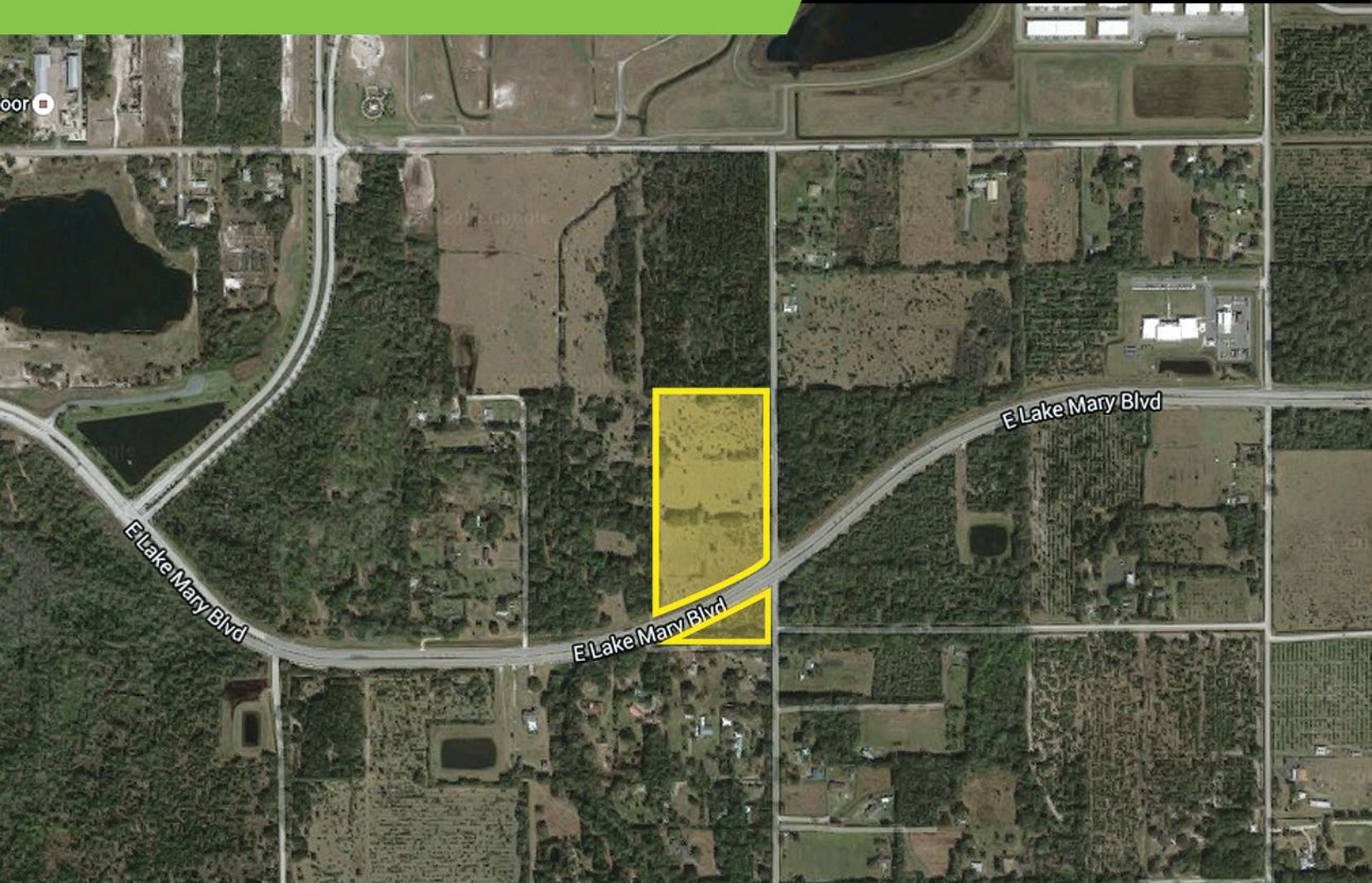


FOR SALE  
16 ± ACRES

SIPES AVE. SANFORD, FL 32773

**PIB**land  
DEVELOPMENT & INVESTMENTS



Sanford is one of Central Florida's most eclectic cities. In coming years, the new and different will mix with the familiar and stable. An eclectic blend of a vital downtown, an attractive waterfront, productive industry and good neighborhoods retains the historic character and rich cultural legacy of Sanford.

- Located a few hundred feet from entrance to Sanford Int'l Airport
- Population of 105,000 people within a 5-mile radius. Average household income of \$71,119
- Potential entrance from Lake Mary Blvd.
- Motivated Seller - DON'T MISS OUT!
- Cleared Property - ready to build

#### PROPERTY HIGHLIGHTS

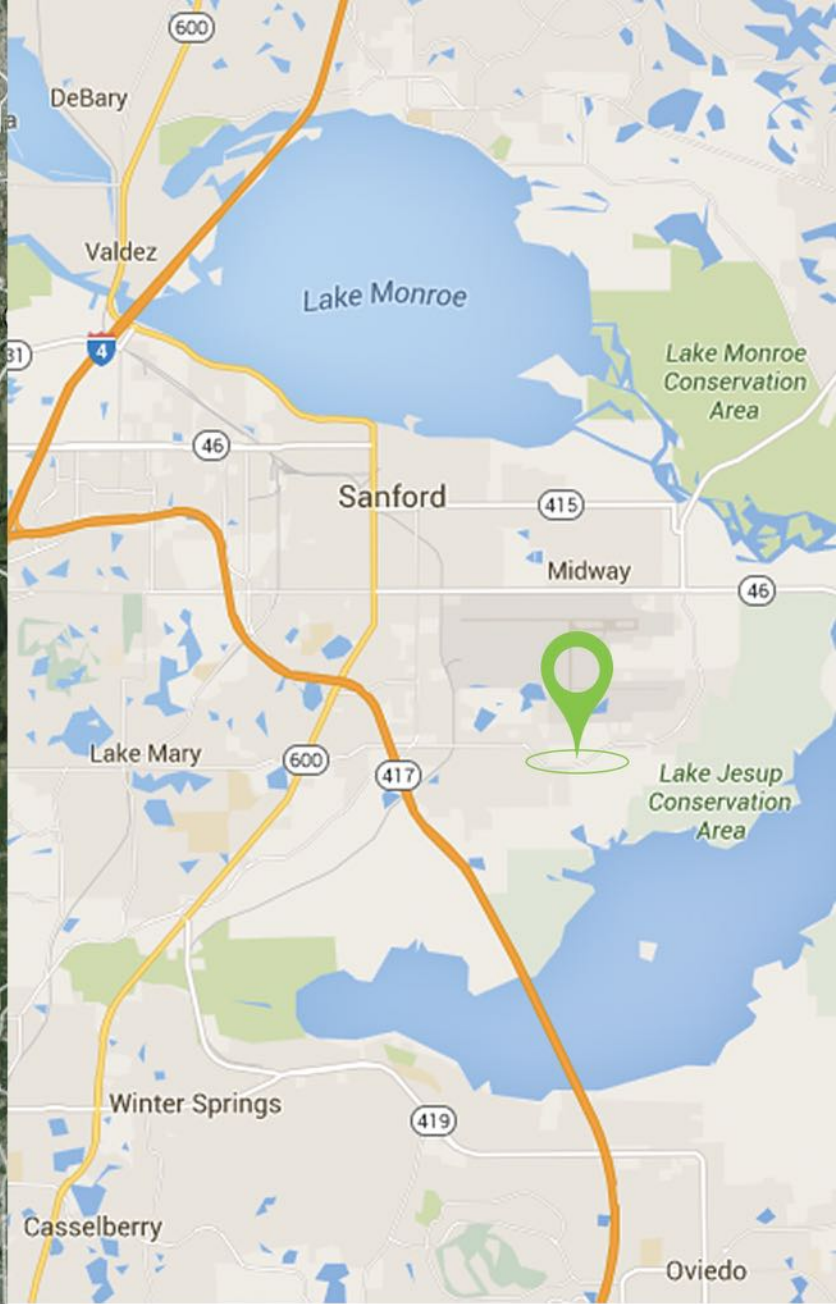
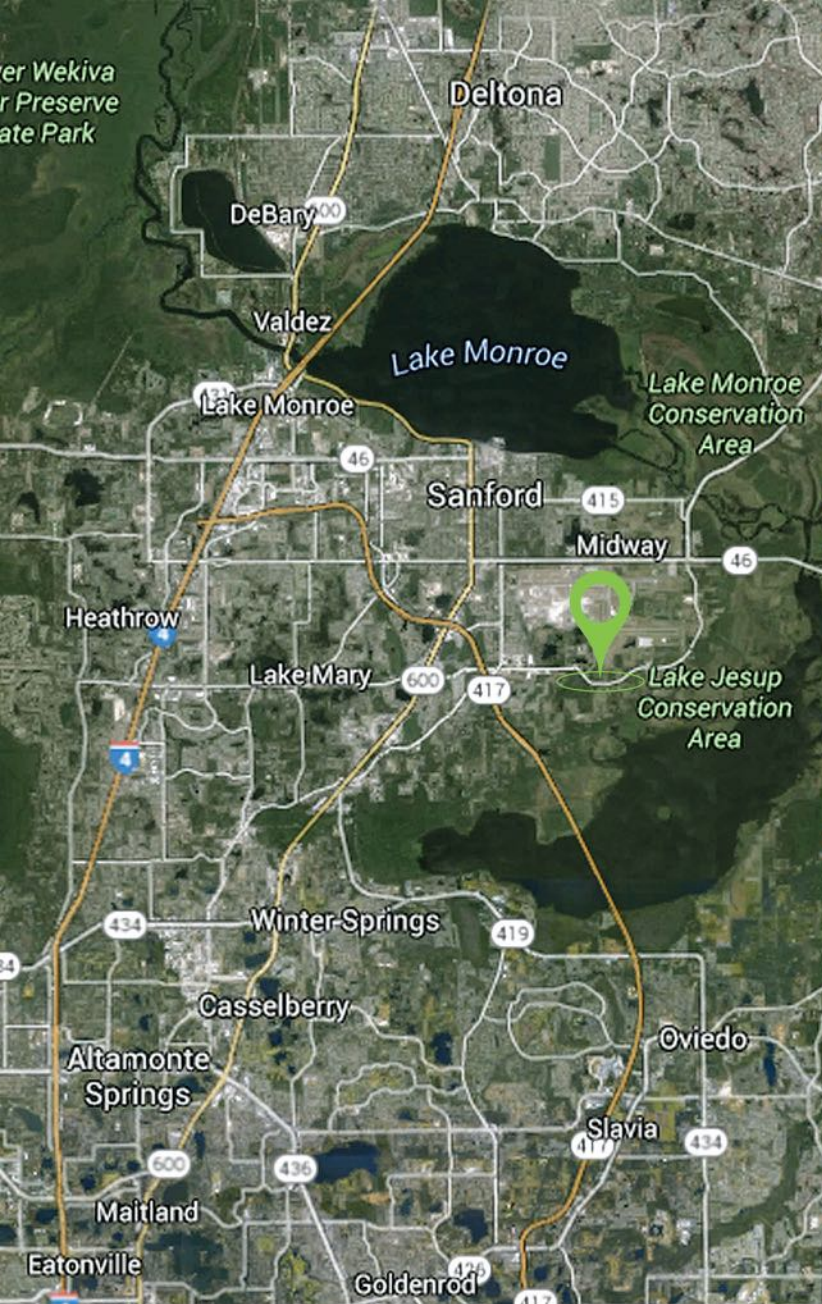
**SIZE:**  
16.56 Acres

**ZONING:**  
Residential

**ADDRESS:**  
Sipes Ave. Sanford, FL 32773

**COUNTY:**  
Seminole County

**PRICE:**  
Please Call



**DISTANCE TO**

- 417: 1 MILE
- SANFORD INT'L AIRPORT: 2 MILES
- DOWNTOWN SANFORD: 5 MILES
- LAKE MONROE: 55 MILES
- I-4: 11 MILES
- DELTONA: 20 MILES
- DOWNTOWN ORLANDO: 26 MILES
- PORT CANAVERAL: 65 MILES

**BOBBY LUTHRA**  
 LICENSED REAL ESTATE ASSOCIATE

407-468-0099  
 BOBLUTHRA@PIBLAND.COM

